

DA50L-A Wireless Entrance Alert Kit

User Manual

1. This device may not cause harmful interference.
2. This device must accept any interference, including interference that may cause undesired operation.

The **DA50L-A** is a entrance alert kit that features 1x passive infrared sensor/transmitter and 1x plug-in receiver. The transmitter features a passive-infrared sensor that triggers when a combination of heat & motion is detected.

The receiver has four different tones it will play. You may group multiple transmitters into a zone and add more receivers. For example, you may put one transmitter over the front door and when motion is detected the receiver will play a “ding” tone. You may put another transmitter over the back door and when triggered the receiver will play a “ding-dong” sound. Multiple receivers may also be used.

Enclosed you will find:

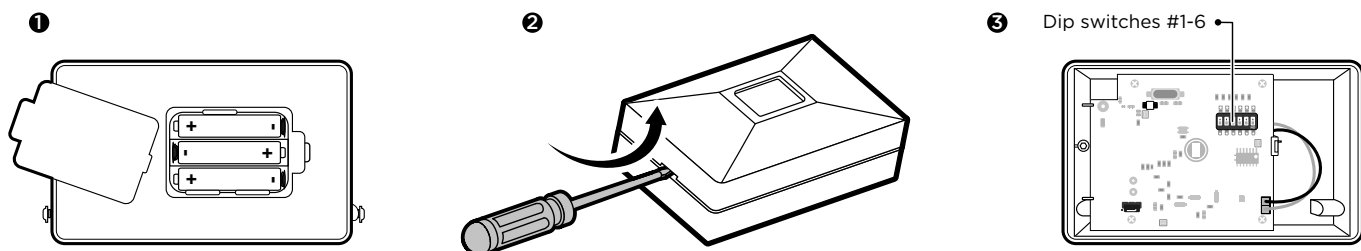
- 1 x DA50T-A Transmitter/Sensor
- 1 x DA50R-A Plugin receiver

Mounting bracket and mounting hardware

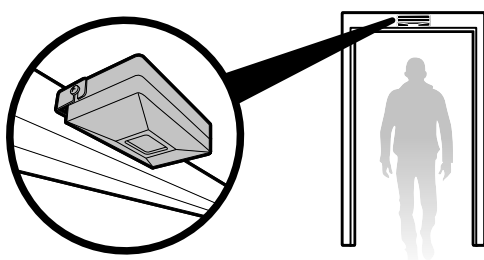
The DA50LT-A is powered by 3 x AAA alkaline batteries (not included). To insert the batteries, open the battery compartment door located on the back of the sensor/transmitter.

Find the indented slot located on the side of the unit. Insert a flat tip screwdriver or coin and twist (see diagram #2). This action should open the box. Remove the cover and locate the dip switches, labeled #1-6. Match dip switches #1-4 on the transmitter with dip switches #1-4 on the receiver. In most cases you do not have to change these dip switches from the factor settings. If a neighboring system is triggering your system, change dip switches #1-4 to any combination you want (up or down) and ensure you match this on your receiver(s). Position dip switches #5-6 in various combinations to change the tone this transmitter instructs the receiver to play.

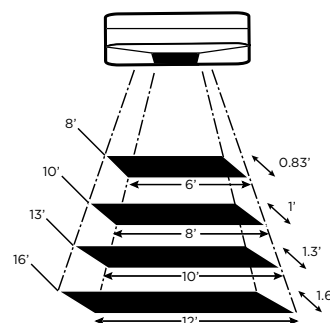
To reassemble the box, place the plastic notch back into the open slot (the same area you used the screwdriver or coin on), then insert the plastic pin located on the other end through the hole, then snap the unit shut.



Where to Mount: The DA50LT-A may be mounted in a variety of locations such as a ceiling, door jamb, or on the side of the door. The invisible passive-infrared beam emitted by the unit comes out in a conical type shape. The coverage area of the beam increases as the distance from the unit increases. For optimal coverage of the ingress and egress of a doorway, it is recommended to mount the unit on the ceiling, one foot in front of the door and angling or pointing the unit towards the door threshold.



Mounting Height	Detection Zone Width	Detection Zone Depth
8'	6'	0.83'
10'	8'	1'
13'	10'	1.3'
16'	12'	1.6'

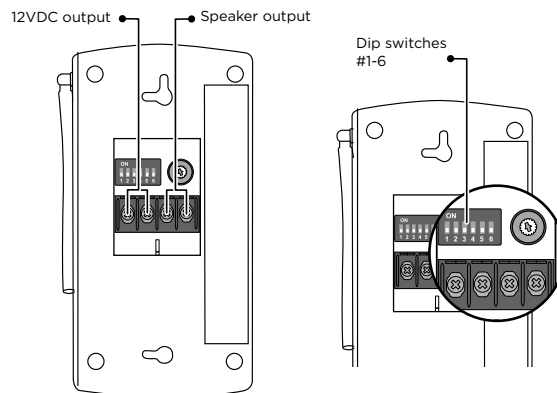


The DA50LR-A comes with a 12VDC plug-in power supply with 5-feet of cord. This unit can be mounted on any wall where there is an electrical outlet located within 500 feet of the transmitter. The DA50LR-A is for indoor locations only. The DA50LR-A may be tabletop or wall mounted.

Six dip switches are located on the backside of the unit. To pair the receiver with the transmitter, dip switch positions #1-4 on the receiver must match the settings of dip switches #1-4 on the transmitter.

The DA50LR-A is provided with internal speaker and auxiliary speaker output terminals marked SPKR. The volume knob controls both the internal and auxiliary speakers.

A set of additional 12VDC output terminals are provided for additional buzzers, strobe lights, sirens, or other 12VDC devices. Please observe marked (+/-) polarity when attaching additional devices. The output time may be set for 1-second or 5-seconds by dip switch in position 5 on the receiver only. The OFF (down) position is 1-second and ON (up) position is 5-seconds.



Misc. Notes & Tips:

- Dip switch position 6 in the receiver is not used at this time.
- If the unit rings too often or picks up every person (example, a large group of people are walking in at the same time) as they come in, you can add a delay of 5-seconds between rings to receiver unit by moving dip switch #5 to the ON position.
- The amount of time power is supplied to the 12VDC output is also controlled by dip switch #5 on the receiver. The OFF setting will supply 1 second of power. Changing this to the ON position will supply 5-seconds of continuous power to the receiver.
- DO NOT mount the transmitter or receiver directly on a metal surface as this may harm the effective transmission range
- Avoid placing the sensor/transmitter near a heating or cooling air duct and in direct sunlight. This may cause false signals or no signal from the detector.

***IMPORTANT: Before changing and dip switches on the receiver or transmitter, power must be disconnected from BOTH UNITS.**

Product Support & Warranty Information:

This product is warranted by the manufacturer for 1 (one) year from purchase date. For troubleshooting & product warranty help, please contact the manufacturer:

Rodann Electronics Mfg.

61658 Pettigrew Rd.
Bend, OR 97702
1-800-366-7010

LIMITED WARRANTY

The product you have purchased is guaranteed against defects in workmanship and materials for the period of one (1) from the purchase date. Warranties implied by law are subject to the same time period limitation. Some states do not allow limitations on how long an implied warranty lasts, so this time limitation may not apply to you. If the product fails due to a manufacturing defect during normal use, please contact our service department:

Not Covered – Batteries and other expendable items are not covered by this warranty. Repair service, adjustment and calibration due to misuse, abuse or negligence are not covered by this warranty. Unauthorized service or modification of the product or of any furnished components will void this warranty in its entirety. This warranty does not include reimbursement for inconvenience, installation, setup time, loss of use, postage, unauthorized service, or other products used in conjunction with, but are not supplied by, Rodann Electronics Mfg.

All requests for replacement must include a dated sales receipt (copies accepted). Rodann Electronics IS NOT LIABLE FOR LOST PROFITS, INDIRECT, SPECIAL, EXEMPLARY, INCIDENTAL OR CONSEQUENTIAL DAMAGES INCLUDING WITHOUT LIMITATION ANY SUCH DAMAGES DUE TO IMPROPER WIRING OR MISUSE OF THE PRODUCT. As some states do not allow the exclusion or limitation of incidental or consequential damages, the above limitation and exclusion may not apply to you. This device complies with Part 15 of the FCC rules.

WARNING: This device complies with Part 15 of the FCC rules, operation of this device is subject to the following conditions:

1. This device may not cause harmful interference, and
2. This device must accept any interference received, including interference that may cause undesired operation. This device complies with RSS-210 of Industry Canada. This warranty gives you specific legal rights, and you may also have other rights which vary from state to state.



This Product is Sold & Marketed by:

1800Doorbell

a LHE, Inc. Company

9655 Florida Mining Blvd. W., Ste 401
Jacksonville, FL 32257

www.1800doorbell.com

904-245-1184

